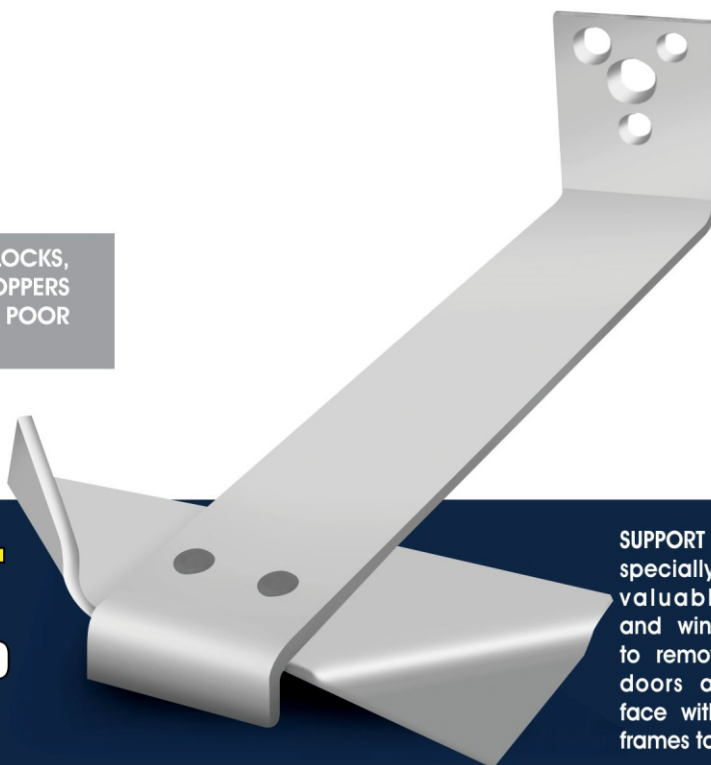


2021
Price List

GOOD QUALITY WOOD, GLASSES, LOCKS, FINISH, HANDLES, HINGES, DOOR STOPPERS DOOR CLOSER, L-DROP ETC. BUT POOR QUALITY HOLD FAST

HOLD-FAST FRAME CLAMP

ROOTS OF DOOR & WINDOW FRAMES



SUPPORT TECH Hold-Fast Clamps are specially designed to give lifetime valuable support to the doors and window frames. They are able to remove all the problems related doors and window which people face with inadequate support to the frames to the frames normally available

MODEL	HOLD FAST SIZE		MATERIAL USED	PRICE Per Pc.
	MM	INCH		
STHF-1	100	4"	MS ZING PLATED	43/-
STHF-2	150	6"	MS ZING PLATED	50/-
STHF-3	225	9"	MS ZING PLATED	73/-
STHF-4	100	4"	SS 304	133/-
STHF-5	150	6"	SS 304	146/-

Protection From Jamming Of Doors And Window Panel Due To Expansion Of Frames During Rainy Season.

Protection from cracking of glass panel due to expansion of frames

Protection from breeding of insects and termites in the gap formed by shifting of frame due to expansion during rainy season.

Protection from locks and hinges becoming non-functional due to expansion or contraction of door and window frames.





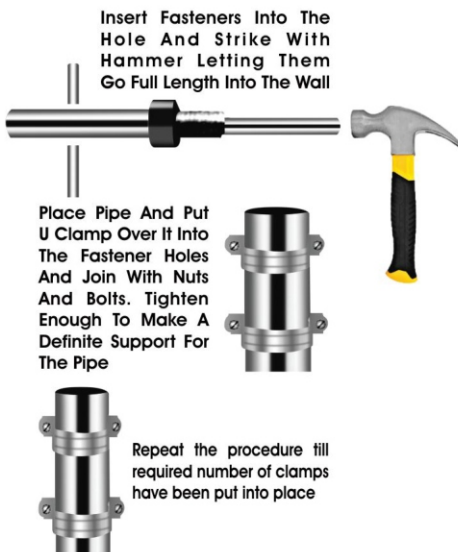
SUPPORT TECH U Clamp Are Very User Friendly. These clamps have been designed to give fast and convenient a completely new meaning. The U CLAMP are very easily taken into any kind of installation program.

U CLAMP

INSTALLATION

Make Holes Of The Required Diameter As Per The Outer Dia Of The Fastener. Clear The Debris Making Clean Holes For The Fastener.

Insert Fasteners Into The Hole And Strike With Hammer Letting Them Go Full Length Into The Wall



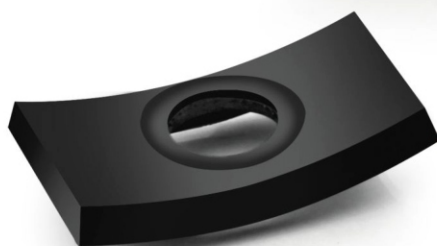
Model Code	PIPE SIZE		PRICE Per Pc.
	MM	INCH	
STUC-10	10	3/8"	8/-
STUC-15	15	1/2"	8/-
STUC-20	20	3/4"	9/-
STUC-25	25	1"	11/-
STUC-32	32	1¼"	13/-
STUC-40	40	1½"	14/-
STUC-50	50	2"	17/-
STUC-65	65	2½"	23/-
STUC-80	80	3"	34/-
STUC-100	100	4"	42/-
STUC-125	125	5"	77/-
STUC-150	150	6"	84/-
STUC-200	200	8"	202/-
STUC-225	225	9"	348/-
STUC-250	250	10"	381/-



CONNECTION CLAMP

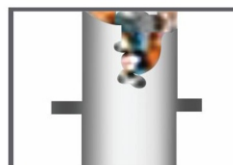


SUPPORT- TECH Connection Clamps For Taking Out Lines From Main Line And Furture Distribution Of Water, Gas, Oil, Dairy, Chemicals Etc. Support Tech Connection Clamps Are Useful At Places Where Smaller Supply Lines Are Needed As In Dairy, Gas, A/c, Pharma, Hotel And Even Households.

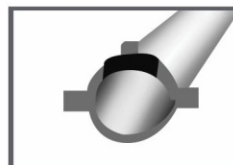


EPDM rubber jacket with extra high sleeve to ensure lifelong leakage proofing

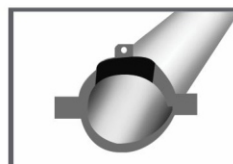
INSTALLATION



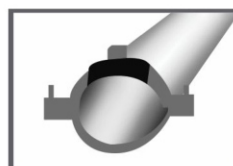
Place The Clamp Half Without The Connection Hole Beneath The Pipe. Make A Puncture In The Main Line From Where A Sub Line Is To Be Taken



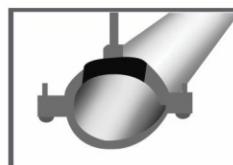
Place The Connection Clamp Half Exactly Over Puncture In The So That The Hole In The Rubber Its Snugly On The Puncture



Position The Other Half Of The Connection Clamp So That It Aligns Well With The Other Half

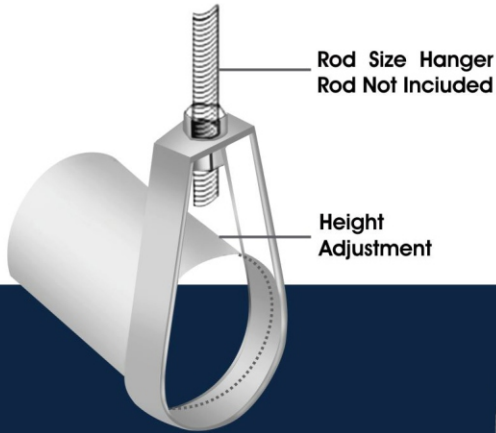


Tighten The Two Haven With Nuts And Holes.

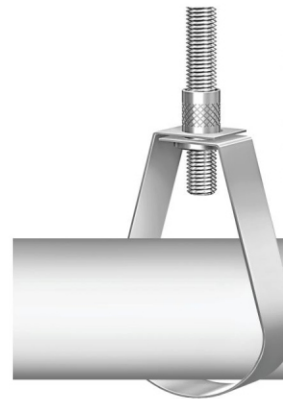
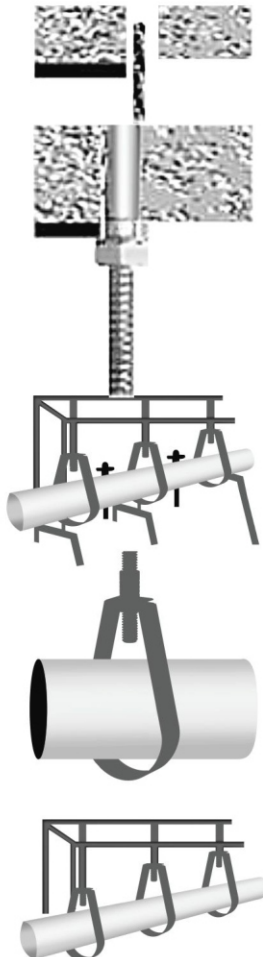


Place A Pipe On The Nut On The Clamp And Tighten To Complete The Sub Line

Model Code	CLAMP SIZE		CONNECTING SOCKET SIZE		PRICE Per Pc.
	MM	INCH	MM	INCH	
STCC-025-15	25	1"	15	1/2"	202/-
STCC-032-15	32	1 1/4"	15	1/2"	208/-
STCC-040-15	40	1 1/2"	15	1/2"	214/-
STCC-040-20	40	1 1/2"	20	3/4"	216/-
STCC-050-15	50	2"	15	1/2"	218/-
STCC-050-20	50	2"	20	3/4"	228/-
STCC-065-15	65	2 1/2"	15	1/2"	232/-
STCC-065-20	65	2 1/2"	20	3/4"	241/-
STCC-080-15	80	3"	15	1/2"	236/-
STCC-080-20	80	3"	20	3/4"	242/-
STCC-100-15	100	4"	15	1/2"	246/-
STCC-100-20	100	4"	20	3/4"	258/-
STCC-125-15	125	5"	15	1/2"	264/-
STCC-125-20	125	5"	20	3/4"	292/-
STCC-150-15	150	6"	15	1/2"	292/-
STCC-150-20	150	6"	20	3/4"	303/-
STCC-200-15	200	8"	15	1/2"	432/-
STCC-200-20	200	8"	20	3/4"	448/-
STCC-250-15	250	10"	15	1/2"	616/-
STCC-250-20	250	10"	20	3/4"	639/-



SPRINKLER HANGER



EPDM RUBBER CASING FOR SMOOTH SUPPORT. The rubber makes an extra grip on the pipe. it also absorbs any vibrations or noise due to the flow inside the pipe and stops them from going to the nuts and bolts and they remain tight and secure.

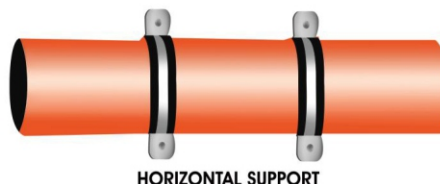
Model Code	NOMINAL PIPE SIZE		ROD SIZE IN MM	PRICE Per Pc.	
	MM	INCH		WITHOUT RUBBER ZINC PLATED	EPDM RUBBER LINING
STSH-15	15	1/2"	8/10	23.00	51/-
STSH-20	20	3/4"	8/10	27.00	55/-
STSH-25	25	1"	8/10	30.00	60/-
STSH-32	32	1¼"	8/10	34.00	68/-
STSH-40	40	1½"	8/10	39.00	81/-
STSH-50	50	2"	8/10	57.00	108/-
STSH-65	65	2½"	10	60.00	117/-
STSH-80	80	3"	10	66.00	130/-
STSH-100	100	4"	12	77.00	151/-
STSH-125	125	5"	12	115.00	203/-
STSH-150	150	6"	16	133.00	241/-



PIPE SUPPORT SPLIT CLAMP



The Support Tech Pipe Support Split Clamps Keep A Fair Distance Between The Pipe And The Wall Which Facilitates Future Repairs And In Maintaining A Clean Blakening Proof Wall.



PIPE SUPPORT SPLIT CLAMP

Support Tech Pipe Support Split Clamp Is An Engineering Marvel. It Has Been Designed To Give Vertical And Horizontal Support To Pipes And Cables.

This Support Does Not Merely Mean Holding Pipes And Cables In Place But Much More Than That. The Support Tech Split Pipe Support Clamps Give Tight And Right Support With The Freedom To Easily Repair, Maintain And Change In Future Which Ordinary Clamps Fail To Do. The Support Tech Clamps Are Designed In Such A Way That They Can easily be said the next generation clamps.



LOCK BOLTS ALLOW
ADJUSTMENT TO
ACCOMMODATE
VARYING PIPE
DIAMETERS



RUBBER PAD
INNER GROOVES
FOR TIGHT SUPPORT



ZINC COATED
ELECTRO GALVANIZED
STEEL CLAMP BODY
(CORROSION
RESISTANT)



M6 LOCK BOLTS
FOR SIZES 1/2" TO
3" M8 LOCK BOLTS
FOR SIZES 4" TO 8"



EPDM RUBBER
LINING FOR VIBRATION
AND SOUND
INSULATION



STRENGTHENED
WELDED NUT M8/
M10-1/2" TO 3"
M10-4", 5", 6"
M12-8"

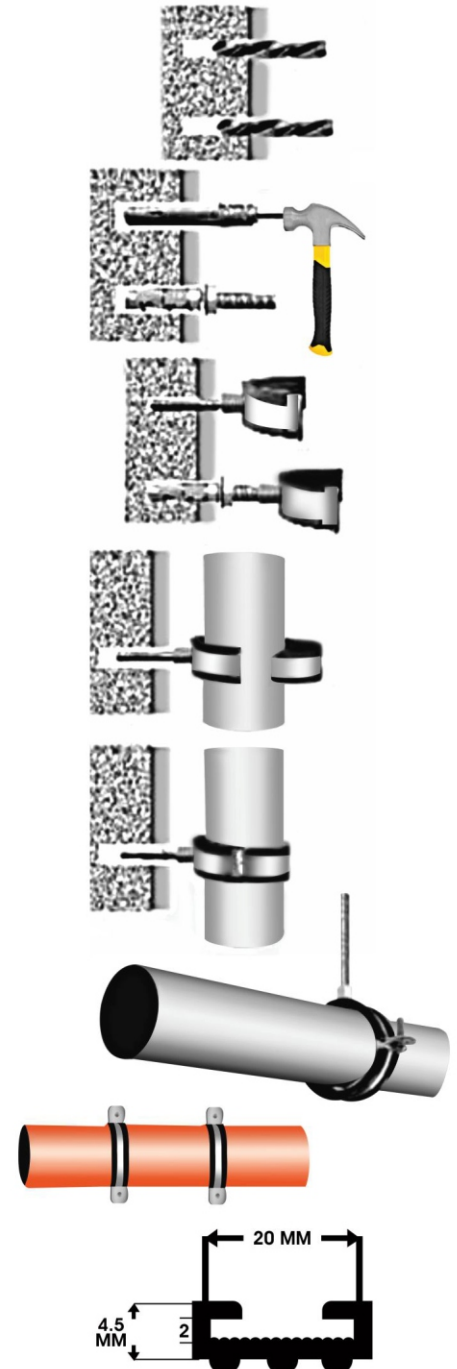
Model Code	NOMINAL PIPE SIZE		ROD SIZE IN	CLAMPING RANGE IN	PRICE Per Pc.	
	MM	INCH			WITHOUT RUBBER ZINC PLATED	EPDM RUBBER LINING
STSC-10	10	3/8"	8 & 10	17-20	40/-	51/-
STSC-15	15	1/2"	8 & 10	20-25	42/-	54/-
STSC-20	20	3/4"	8 & 10	26-30	44/-	59/-
STSC-25	25	1"	8 & 10	32-36	49/-	63/-
STSC-32	32	1¼	8 & 10	38-44	54/-	80/-
STSC-40	40	1½	8 & 10	47-51	56/-	86/-
STSC-50	50	2"	8 & 10	60-64	60/-	97/-
STSC-65	65	2½	8 & 10	74-80	63/-	118/-
STSC-80	80	3"	8 & 10	87-92	72/-	134/-
STSC-90	90	3½	10	95-120	95/-	172/-
STSC-100	100	4"	10	113-118	97/-	179/-
STSC-125	125	5"	10	132-142	109/-	208/-
STSC-150	150	6"	10	160-167	124/-	236/-
STSC-200	200	8"	12	215-220	219/-	406/-
STSC-225	225	9"	12	235-240	447/-	742/-
STSC-250	250	10"	12	263-270	478/-	754/-
STSC-300	300	12"	12	313-320	639/-	948/-

- PLUMBING
- SANITATION
- FIRE FIGHTING
- ELECTRIC AND
- POWER LINES
- AIR CONDITIONING
- GAS, OIL, CHIMNEY
- IRRIGATION AREAS
- SOLAR PLANTS

- PARKINGS
- FACTORIES AND PLANTS
- HOUSE COMPLEXES
- HOSPITALS
- HOTELS
- SHOPPING MALLS
- PHARMACEUTICALS
- GARDENS AND
- LANDSCAPES

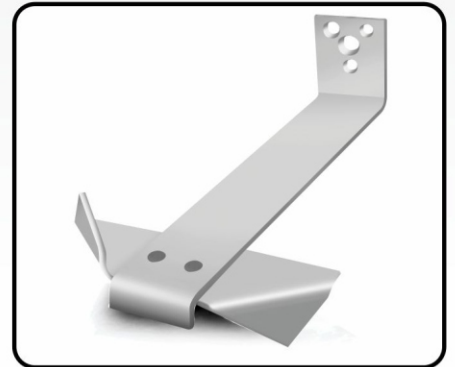
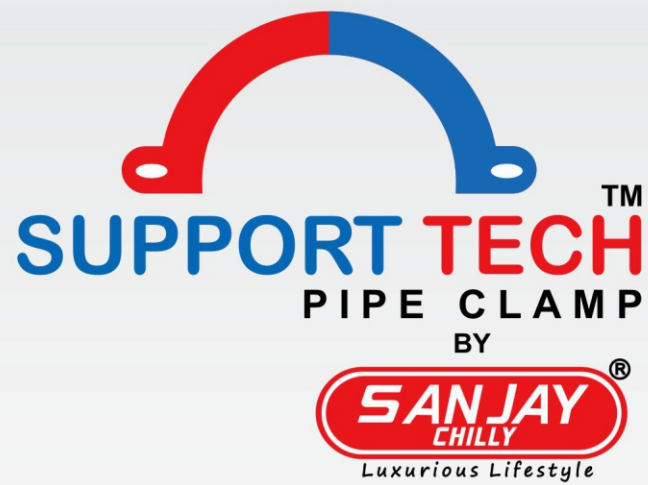
EPDM RUBBER LINING

EPDM RUBBER LINING ENSURES SMOOTH AND TIGHT GRIP. IT ABSORBS ANY VIBRATIONS AND NOISE DUE TO FLOW INSIDE THE PIPE AND THUS ENHANCES SUPPORT STRENGTH. SINCE THE VIBRATIONS AND NOISE DO NOT PASS TO NUTS AND BOLTS THEY IN TURN NOT BECOME LOOSE AND CONTINUE TO HOLD THE CLAMP IN PLACE.



TECHNICAL DATA

MATERIAL	EPDM
STRETCH	≥ 250%
HARDNESS	45 SHORE A
OZONE RESISTANCE	GRADE O
TEMPERATURE RESISTANCE	-40°C - 110°C



SHREE SHYAM ENTERPRISES

Email : shreeshyamenterprises362@gmail.com

Contact No.: 9891192639